

DARWIN FESTIVAL

7-24 AUGUST 2025

INPEX Sunset Stage Access Guide

Proudly supported by



Introduction



Image Description: Audience gathered at the INPEX Sunset Stage for a live performance at the Darwin Festival, with a brightly lit stage and surrounding trees.

INPEX Sunset Stage is at Festival Park. Many performances take place at this venue, from comedy to music to circus.

To is free to enter Festival Park, however, you must have a ticket to enter the INPEX Sunset Stage.

Festival Park is open from 5pm until late, 7-24 August (excluding Mondays)

The INPEX Sunset Stage is wheelchair accessible; however, it includes areas of grass terrain. Assisted wheelchair access is recommended.

Arriving at Festival Park



Image Description: Tree-lined street with parked cars, grassy areas, and buildings in the background under a clear sky.

Festival Park is located at Civic Park, near the corner of Smith St and Harry Chan Ave in the Darwin CBD.

The main entrance is via Smith Street.

Street parking is available throughout the city, but limited.

The closest multi-storey car park is the State Square Underground Car Park, located approximately 250 metres from the Smith Street entrance.

The closest designated accessible parking is on Harry Chan Avenue, adjacent to the bus terminal. An accessible drop-off point is available outside the main entrance on Smith Street.

Festival Park is conveniently located next to the Darwin Bus Interchange, which provides services to various locations across Darwin.

You don't need a ticket to enter Festival Park.

There may be lots of people and loud music.



Image Description: A sunny street scene featuring a tall streetlight pole, palm trees near a building on the left, and two parked buses near a pedestrian crossing on the right.

There is a second entrance at the other side of the park, located where Cavenagh St meets Harry Chan Avenue. This entrance is in front of the City of Darwin building, and next to the bus interchange.

There are two accessible parking spots to the left of this entrance.

This guide will show you around Festival Park from the perspective of entering via Smith Street.

Box Office



Image Description: Nighttime festival scene with people, lights, and a box office booth.

As you enter Festival Park, on your left, you will see the Box Office. There you can buy tickets to Darwin Festival shows, and pick up a free Festival Program.

You can also buy festival merchandise, such as t-shirts and stubby holders.

INPEX Sunset Stage



Image Description: Crowd lining up outside the INPEX Sunset Stage under festive lights.

To the right, you'll see the outside of the INPEX Sunset Stage.

There may be people lining up to enter before a show, or lots of people exiting after a show.

There may be loud music coming from inside.

This is where you line up to enter the INPEX Sunset Stage.

Tickets



Image Description: People lining up outside the illuminated entrance to the INPEX Sunset Stage, surrounded by trees and decorative elements.

To enter the INPEX Sunset Stage, you must have a ticket.

Please have your ticket ready. You can print your ticket out or have it on your phone.

There will be Darwin Festival staff as you enter the INPEX Sunset Stage who will scan your ticket.

Friends of the Festival receive priority entry to performances at this venue. You will see a sign for where to line up.

Please note that Club Awi and other events may be strictly 18+. Check the individual event page for the show for specific age restrictions and recommendations.

Inside the INPEX Sunset Stage



Image Description: Nighttime audience seated under trees, watching live performances at the INPEX Sunset Stage with colorful lighting.

When you enter, you will see the stage straight ahead of you.

The audience area will be set up depending on the performance.

Some music gigs will not have audience chairs, but instead the audience will stand.

Some events offer full seating, while others are standing events with limited seating available.

At the entrance of the venue, there is a seating area that will always be there, whether a standing gig or not.

Bar



Image Description: Wooden bar beneath a large tree, featuring a bright “Hot August Nights” sign, decorative banners, and hanging lanterns.

To your left when you enter, you will see a bar where alcoholic and non-alcoholic drinks can be purchased by cash or card (card preferred). BYO alcohol is strictly prohibited.

When purchasing a drink with a cup, you can purchase a Bettercup to keep. This can be swapped for a fresh cup if you buy another drink. You can take it home if you want to keep it, or leave it in the Bettercup bin for recycling. There are no refunds on cups.

If you purchased food and drink at Festival Park, you can bring this into the INPEX Sunset Stage.

There may be queues to purchase drinks.

Toilets



Image Description: Portable toilet unit from EcoTreat Solutions in a tree-lined outdoor area, marked by a "TOILETS" sign and accompanied by a green bin.

There are portaloos within the INPEX Sunset Stage, next to the bar.

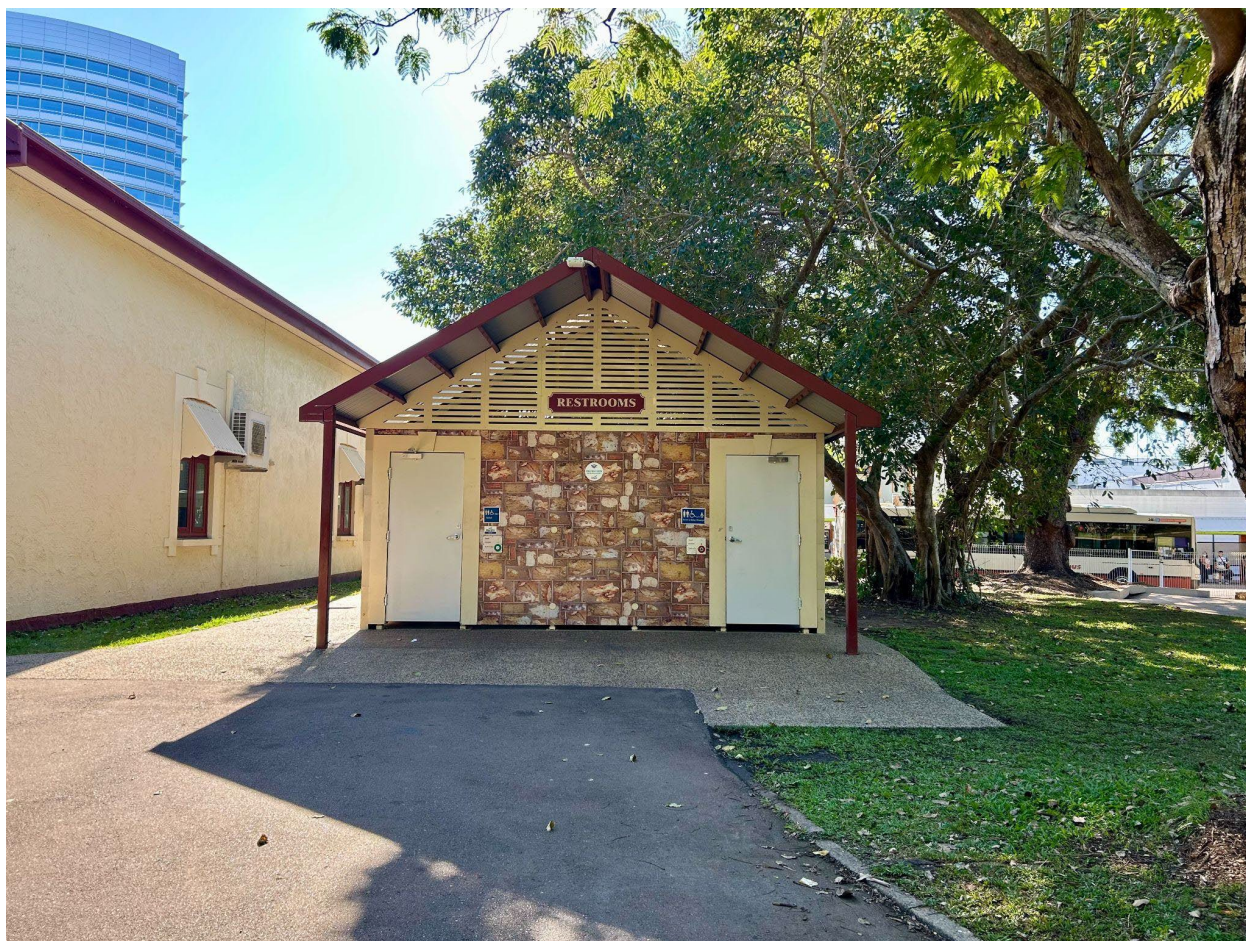


Image Description: Restroom building with a red roof in a park-like setting.

If you require an accessible toilet, they can be found directly opposite the entrance to the INPEX Sunset Stage, within Festival Park (above).

You are allowed to exit the venue and re-enter during the performance, but have your ticket ready to show.

During the show



Image Description: Nighttime audience seated under trees, watching live performances at the INPEX Sunset Stage with colorful lighting.

When the performance takes place, there will be loud noise.

You can stand up and move around during the performance. You can use the portaloos or go to the bar.

Exiting the venue

When the performance ends, the performers will take a bow and the audience will clap. This may result in loud noise.

Audiences exit at the back of venue, near where you entered. You will exit into Festival Park, near the Box Office.

Feel free to stay at Festival Park, and enjoy food, drinks and some free performances on the Darwin Port Bandstand.

Access Program proudly supported by

